

## Mycotoxin Testing Made Easy | Hygiena's Helica™ ELISA Kits

Mycotoxins are toxic substances naturally produced by fungi (molds) that may contaminate agricultural commodities. They pose health hazards to humans and animals, affecting an estimated 25% of the world's crops. Mycotoxins are most likely to occur in grain or feed grown when environmental conditions of temperature and humidity are favorable for the growth of specific fungi. Some fungi favor heat, high moisture, and humidity; while others favor cool, wet climates. Most toxic fungi attack plants in the field, while some others proliferate in grain or feed during storage. These fungi result in a variety of dangerous mycotoxins, some of which are known carcinogens.



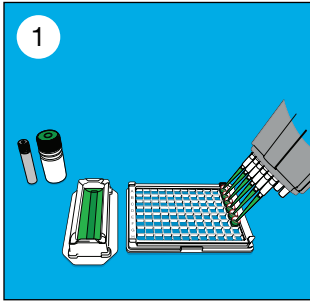
More than 100 countries have established regulations for mycotoxins in food and feed. A good quality management program requires a fast decision whether goods fulfill their quality criteria, by quick analysis to draw these conclusions. Rapid test kits are an essential and efficient tool for determining the level of mycotoxins in a sample. Hygiena® offers competitive enzyme-linked immunoassays intended for the quantitative detection of mycotoxins in feed, grain, nuts and grain by-products.

### Product Highlights

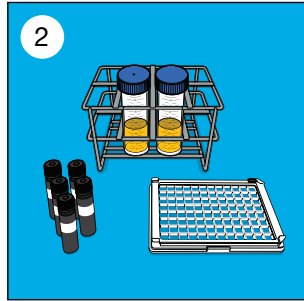
- Rapid and highly sensitive kits
- Results in 30 - 90 minutes
- Cost-effective and user-friendly tests
- One year stability and reproducibility of results
- Easy to follow instructions
- Color-coded reagents in convenient, easy to use vials
- No clean up column required

Catalog Number	Product	Products
KIT5000	Aflatoxin M1 in Milk (Sensitive)	Milk and dairy products
KIT5001	Aflatoxin M1 in Milk	Milk and dairy products
KIT5003	Aflatoxin M1 in Milk (ULTRA)	Milk and dairy products
KIT5004	Aflatoxin B1 (Rapid Test)	Grains and cereals
KIT5005	Aflatoxin B1 Low Matrix	Grains, baby formula, oils, nuts, spices, animal feeds
KIT5006	Total Aflatoxin Low Matrix	Grains, baby formula, oils, nuts, spices, animal feeds
KIT5007	Total Aflatoxin	Grains and cereals
KIT5008	Mycotox Total Aflatoxin	Grains and cereals
KIT5009	Total Aflatoxin Hydro	Corn
KIT5010	Deoxynivalenol	Grains, cereals, animal feeds
KIT5011	Deoxynivalenol RAPID ELISA	Grains and cereals
KIT5014	Fumonisin Hydro	Grains and cereals
KIT5015	Ochratoxin A Universal	Grains and cereals
KIT5016	Ochratoxin in Wine	Wine, grape juice, grape must, licorice
KIT5017	T-2 Toxin	Grains, cereals, animal feeds
KIT5018	Zearalenone Low Matrix	Grains, cereals, animal feeds

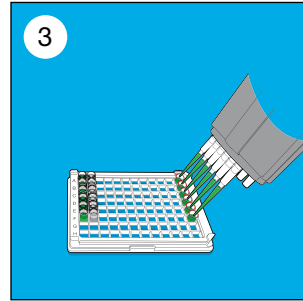
# Assay Procedure



Add conjugate to mixing wells.

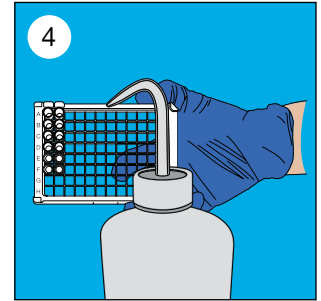


Add standards and samples to mixing wells.

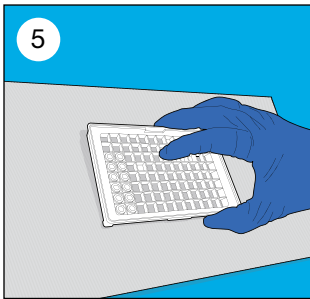


**A.** Use multichannel pipettor to mix by pipetting up and down, then transfer the standards and samples to the appropriate antibody coated wells.

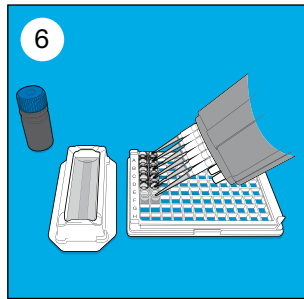
**B.** Incubate at room temperature.



Decant the contents from the microwells into a discard basin. Wash the wells by filling with wash buffer, then decant the buffer into the discard basin. Repeat for 5 washes.

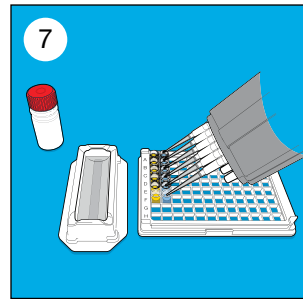


Tap the wells (face down) on a layer of absorbent paper to remove residual wash buffer.



**A.** Add substrate to each well.

**B.** Cover and incubate.



**A.** Stop reaction by adding stop solution. The color will change to yellow.

**B.** Read with microplate reader.